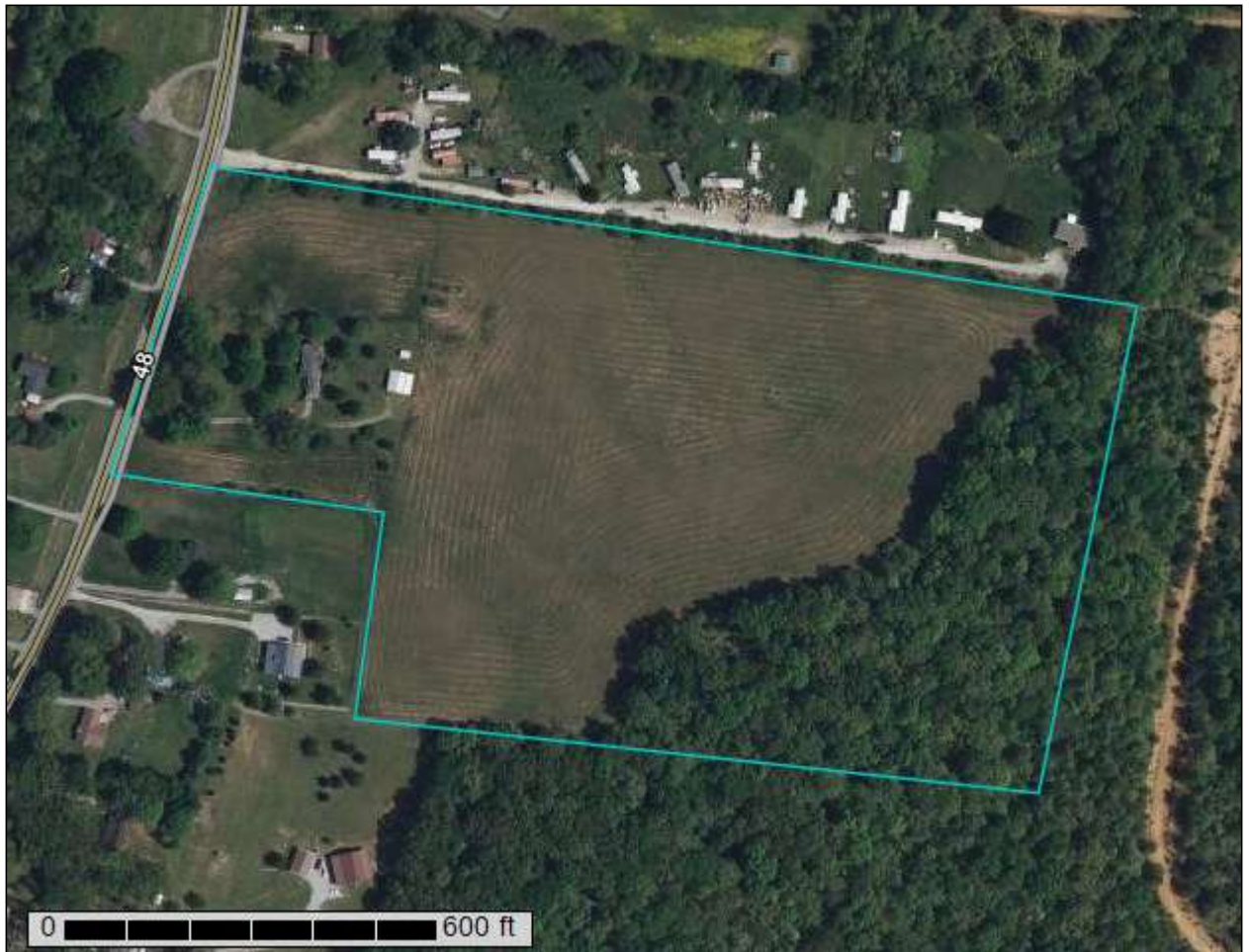
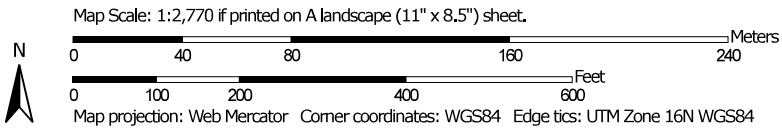


Custom Soil Resource Report for Dickson County, Tennessee



Custom Soil Resource Report Soil Map



Map Unit Legend

Map Unit Symbol	Map Unit Name	Acres in AOI	Percent of AOI
SeC	Sengtown gravelly silt loam, 5 to 12 percent slopes	19.2	73.8%
SeD2	Sengtown gravelly silt loam, 12 to 20 percent slopes	6.0	22.9%
SeF	Sengtown gravelly silt loam, 30 to 60 percent slopes	0.9	3.3%
Totals for Area of Interest		26.0	100.0%

Map Unit Descriptions

The map units delineated on the detailed soil maps in a soil survey represent the soils or miscellaneous areas in the survey area. The map unit descriptions, along with the maps, can be used to determine the composition and properties of a unit.

A map unit delineation on a soil map represents an area dominated by one or more major kinds of soil or miscellaneous areas. A map unit is identified and named according to the taxonomic classification of the dominant soils. Within a taxonomic class there are precisely defined limits for the properties of the soils. On the landscape, however, the soils are natural phenomena, and they have the characteristic variability of all natural phenomena. Thus, the range of some observed properties may extend beyond the limits defined for a taxonomic class. Areas of soils of a single taxonomic class rarely, if ever, can be mapped without including areas of other taxonomic classes. Consequently, every map unit is made up of the soils or miscellaneous areas for which it is named and some minor components that belong to taxonomic classes other than those of the major soils.

Most minor soils have properties similar to those of the dominant soil or soils in the map unit, and thus they do not affect use and management. These are called noncontrasting, or similar, components. They may or may not be mentioned in a particular map unit description. Other minor components, however, have properties and behavioral characteristics divergent enough to affect use or to require different management. These are called contrasting, or dissimilar, components. They generally are in small areas and could not be mapped separately because of the scale used. Some small areas of strongly contrasting soils or miscellaneous areas are identified by a special symbol on the maps. If included in the database for a given area, the contrasting minor components are identified in the map unit descriptions along with some characteristics of each. A few areas of minor components may not have been observed, and consequently they are not mentioned in the descriptions, especially where the pattern was so complex that it was impractical to make enough observations to identify all the soils and miscellaneous areas on the landscape.

The presence of minor components in a map unit in no way diminishes the usefulness or accuracy of the data. The objective of mapping is not to delineate pure taxonomic classes but rather to separate the landscape into landforms or

Dickson County, Tennessee

SeC—Sengtown gravelly silt loam, 5 to 12 percent slopes

Map Unit Setting

National map unit symbol: kpj1
Elevation: 600 to 1,300 feet
Mean annual precipitation: 48 to 55 inches
Mean annual air temperature: 57 to 61 degrees F
Frost-free period: 185 to 205 days
Farmland classification: Farmland of local importance

Map Unit Composition

Sengtown and similar soils: 100 percent
Estimates are based on observations, descriptions, and transects of the mapunit.

Description of Sengtown

Setting

Landform: Hillslopes
Landform position (three-dimensional): Crest
Parent material: Clayey residuum weathered from cherty limestone

Typical profile

H1 - 0 to 9 inches: gravelly silt loam
H2 - 9 to 15 inches: gravelly silty clay loam
H3 - 15 to 60 inches: gravelly clay

Properties and qualities

Slope: 5 to 12 percent
Depth to restrictive feature: More than 80 inches
Drainage class: Well drained
Capacity of the most limiting layer to transmit water (Ksat): Moderately high to high
(0.60 to 2.00 in/hr)
Depth to water table: More than 80 inches
Frequency of flooding: None
Frequency of ponding: None
Available water supply, 0 to 60 inches: Moderate (about 6.4 inches)

Interpretive groups

Land capability classification (irrigated): None specified
Land capability classification (nonirrigated): 3e
Hydrologic Soil Group: B
Ecological site: F122XY020TN - Cherty Limestone Escarpment
Hydric soil rating: No

SeD2—Sengtown gravelly silt loam, 12 to 20 percent slopes

Map Unit Setting

National map unit symbol: 2qh76
Elevation: 600 to 1,300 feet